



# 121 WHITEROCK BAY

Whiterock BT23 6QA

---

*Offers Over*  
**£499,950**



HOUSE -  
DETACHED  
Add Text Here

| 4 🛏 | 2 🚿 | 2 🚗

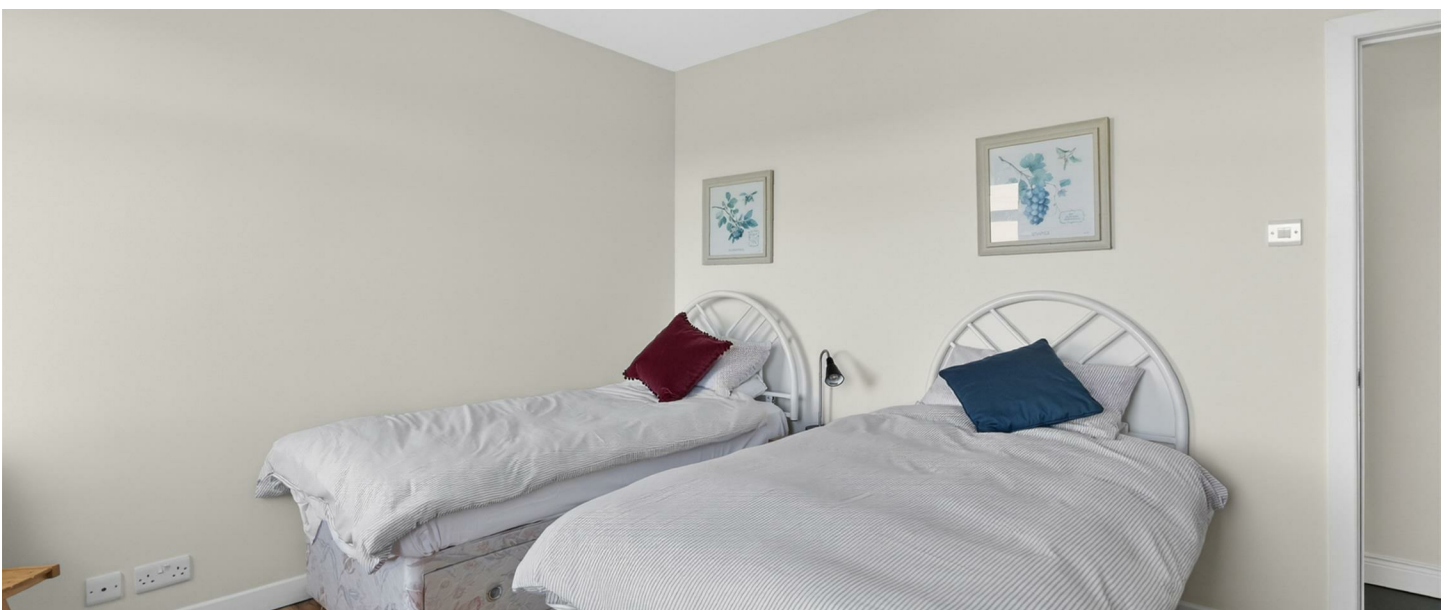
## KEY FEATURES

Add Text Here



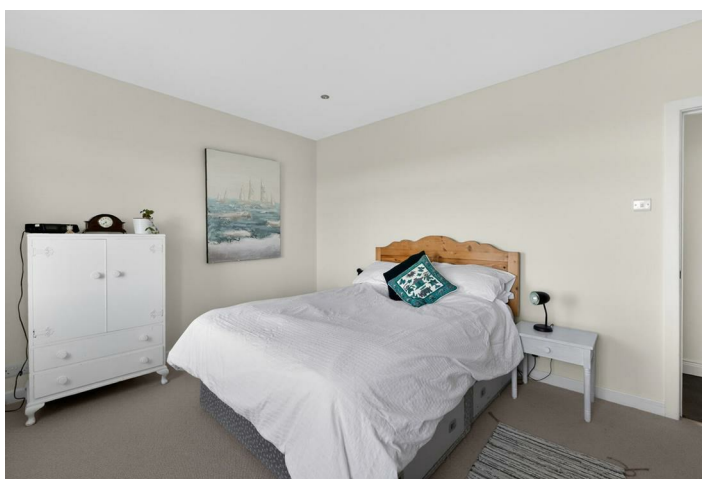
## ROOM DETAILS

<b>GROUND FLOOR</b>	<i>Bedroom Two</i> 11'4" x 13'	<i>Bedroom Four</i> 20'6" x 10'11"
<i>Entrance Hallway</i>	<i>Principal Bedroom</i> 11'7" x 14'8"	<i>Floored Attic</i> 10'10" x 36'1"
<i>Kitchen/Dining</i> 26'6" x 10'9"	<i>Bedroom Three</i> 10'11" x 10'5"	<b>OUTSIDE</b>
<i>Family Lounge</i>	<i>En-suite Shower Room</i>	<i>Attached Garage</i> 21'8" x 14'4"
<i>Utility Room</i> 7'5" x 9'4"	<b>FIRST FLOOR</b>	
<i>Bathroom</i> 7'5" x 7'7"	<i>Landing</i>	



## DIRECTIONS

*From Comber Square, head along Killinchy Street onto the A22 all the way to Balloo. Take a left onto Beechvale Road and continue through Killinchy to Whiterock. At the bottom of Whiterock Road continue round onto Whiterock Bay and number 121 is located on the left-hand side.*



## THE LOCAL AREA

*The location is second to none, with Strangford Lough Yacht club a short stroll away, outdoor pursuits on Sketrick Island and renowned eateries including Daft Eddys nearby. The charming village of Killinchy and Comber are both within easy reach, providing excellent road and transport links to Belfast for those who need to commute. There are also several attractions nearby including Castle Espie Wetland Centre, Sketrick Castle Ruins and Nendrum Monastic site.*



Energy Efficiency Rating		Current	Potential
Very energy efficient - lower running costs			
(92 plus) A			
(81-91) B			
(69-80) C			
(55-68) D		66	70
(39-54) E			
(21-38) F			
(1-20) G			
Not energy efficient - higher running costs			
Northern Ireland		EU Directive 2002/91/EC	

## OUR BRANCHES

B' FAST (028) 9065 3333 H'WOOD (028) 9042 8888 BANGOR (028) 9131 3833 D'DEE (028) 9188 8881 COMBER (028) 9187 1212

property@johnminnis.co.uk

JOHNMINNIS.CO.UK     

