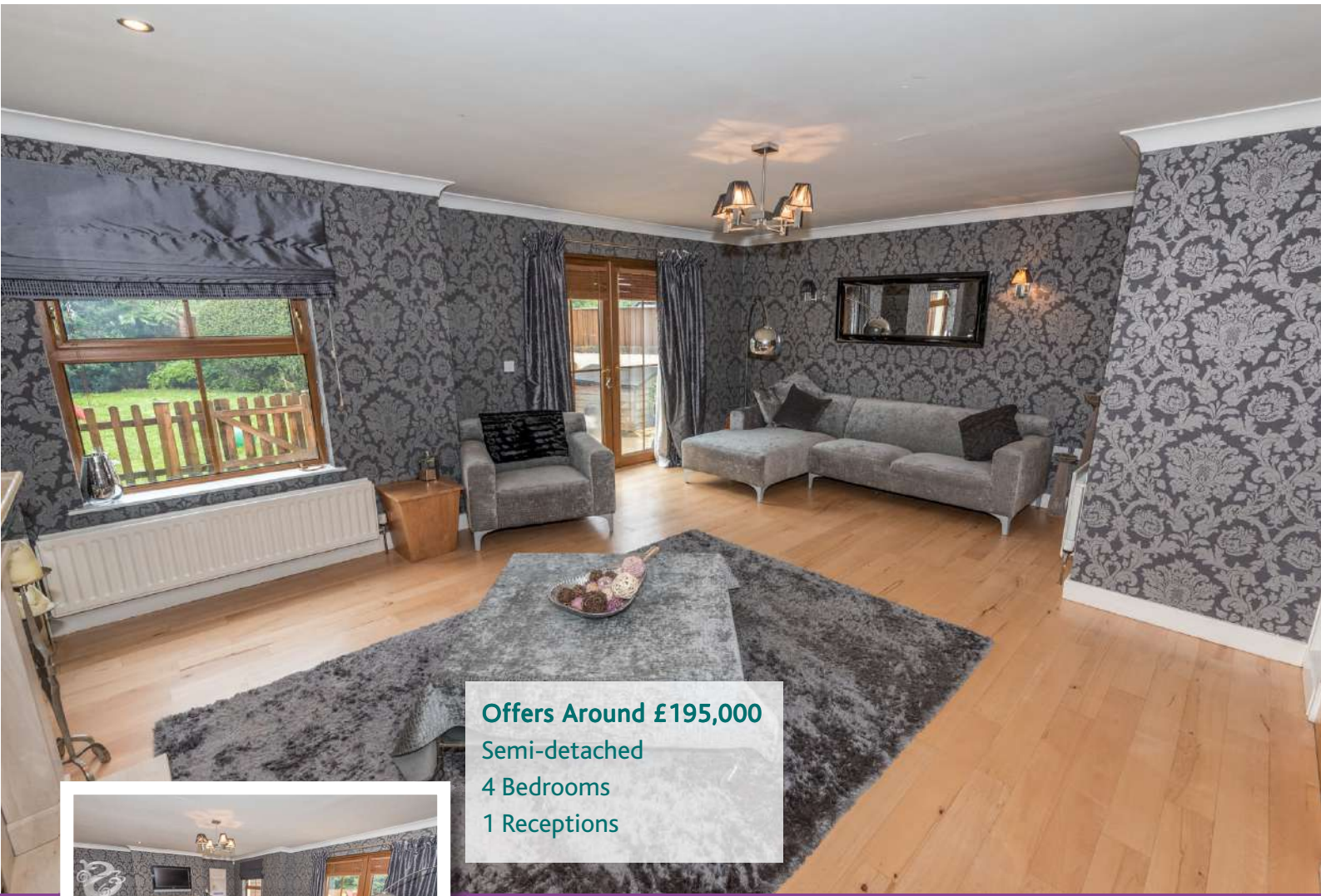


**AGREED**



 **JOHNMINNIS**  
ESTATE AGENTS &  
LETTING SPECIALISTS

**4 Motte Lodge, East Link Road | Dundonald, BT16 2QF**  
**OFFERS AROUND £195,000**



Offers Around £195,000  
Semi-detached  
4 Bedrooms  
1 Reception



## Property Features

- Modern Spacious Semi Detached Villa
- Ease of Access to Excellent Range of Schools for all Ages, Ulster Hospital and George Best City Airport
- Modern Fully Fitted Kitchen with Casual Dining Space
- Large Lounge with Feature Polished Limestone Fireplace and Double Glazed French Doors to Rear Garden
- Four Well Proportioned Bedrooms with Master Incorporating Luxurious En Suite
- Bathroom with White Suite
- Ground Floor WC
- Driveway Parking
- Gas Fired Central Heating and Oak PVC Double Glazing
- South Facing and Private Rear Garden
- Ideally Suited to Young Professional or Family Market
- Earliest Appraisal Recommended

# Accommodation

## Ground Floor

Reception Hall

Ground Floor WC

Lounge  
20'2" x 15'6"

Kitchen  
15'11" x 12'10"

## First Floor

Landing

Bedroom One with En Suite  
12'6" x 12'4"

Bedroom Two

Bedroom Three  
10'5" x 12'4"

Bedroom Four  
9'8" x 6'9"

Bathroom

## Outside

Enclosed South Facing Rear Garden

For more information and photographs regarding the accommodation in this property, please visit:  
[johnminnis.co.uk](http://johnminnis.co.uk)

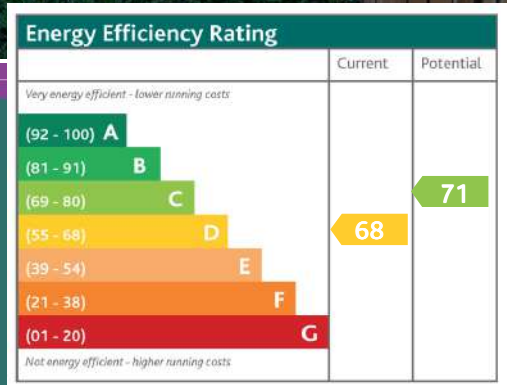


"This modern semi detached family home is located in a small Development of 6 houses. Internally the property is a superb example of modern living with little expense spared to fixtures and fittings. With so many quality attributes on offer it is only upon personal appraisal that one can fully appreciate all that this desirable home has to offer."



# Directions

Motte Lodge can be located off the East Link Road travelling from Dundonald village on the left hand side. Number 4 is one of five in the development.



## Viewing

By appointment through agent.

## Free Valuation

We offer property valuations and financial advice free of charge to all our clients.



## JOHNMINNIS RENTALS

Our rentals division deal with all aspects of property rental, including full property management and corporate listings.

## Awards & Recognition



## Join Our Mailing List

Keep up to date with the latest news and property listings. Contact us or join our mailing list.



These particulars do not constitute any part of an offer or contract. None of the statements contained in these particulars are to be relied on as statements or representations of fact and intending purchasers must satisfy themselves by inspection or otherwise to the correctness of each of the statements contained in these particulars. The vendor does not make or give, neither John Minnis, nor any person in its employment has any authority to make or give, any representation or warranty whatever in relation to this property. All dimensions are taken to nearest 3 inches.



# JOHNMINNIS

ESTATE AGENTS & LETTING SPECIALISTS